



# PROJECT OF GREEN BUS STOP AT UNIVERSIDAD POLITÉCNICA DE MADRID



## IDEA DESCRIPTION

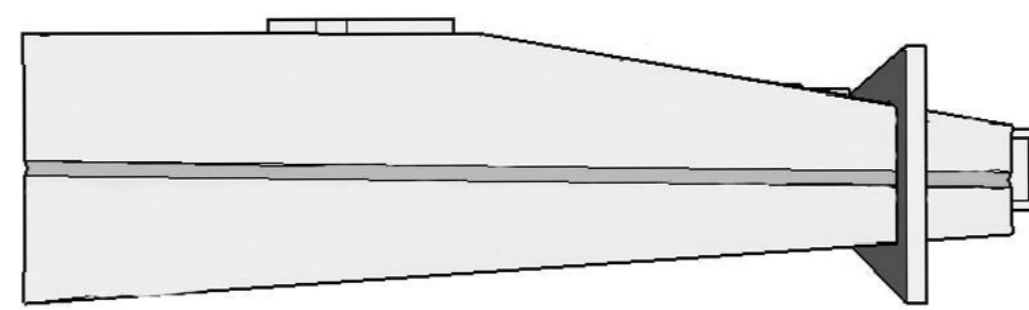
THE SHOWN BUS STOP WAS DESIGNED MAINLY FOR STUDENTS OF A NEARBY UNIVERSITY. THE MAIN INSPIRATION AT WORK WAS THE HISTORICAL GATE LOCATED ON THE CAMPUS AREA. THE GLAZED SIDE SHOULD NOT ONLY ALLOW A VIEW OF THE STREET, BUT ITS FORM ALSO REFERENCES TO THE HISTORY. A COMBINATION OF STEEL, WOOD AND GLASS WERE USED TO CREATE THIS BUS STOP. THE GEOMETRIC CONNECTION OF THE SHAPES WITH THE GREEN WALL AND THE ROOF IS A MODERN AND ALSO MULTIFUNCTIONAL SOLUTION FOR DESIGNING OUTDOOR PUBLIC OBJECTS IN AREAS WITH A CONTINENTAL MEDITERRANEAN CLIMATE TO OPTIMIZE TEMPERATURE IN THE NEAREST ENVIRONMENT.

## LOCATION

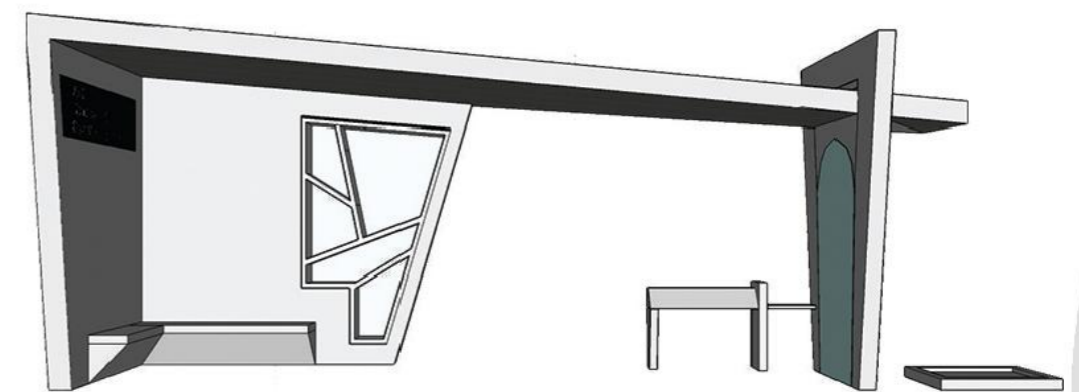


## DESIGN PLANS

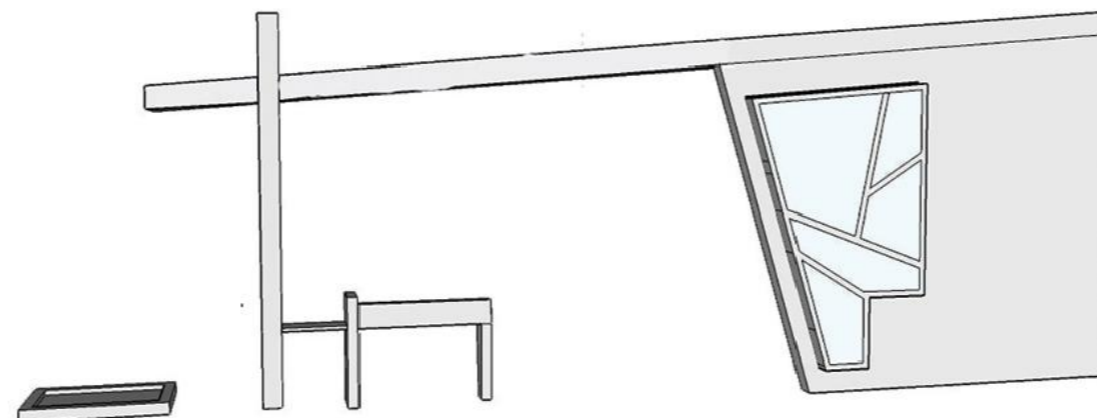
VIEW FROM THE TOP



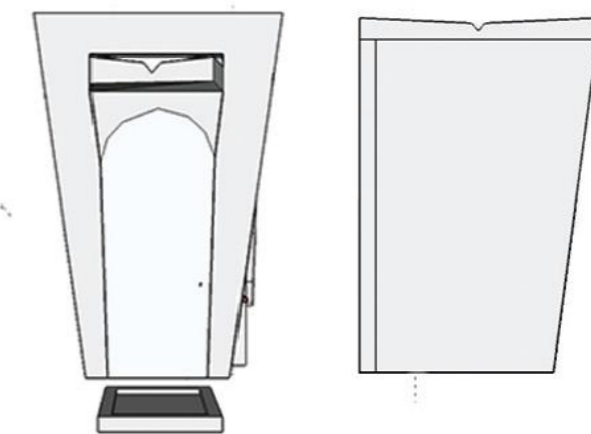
FRONT VIEW



VIEW FROM THE BACK



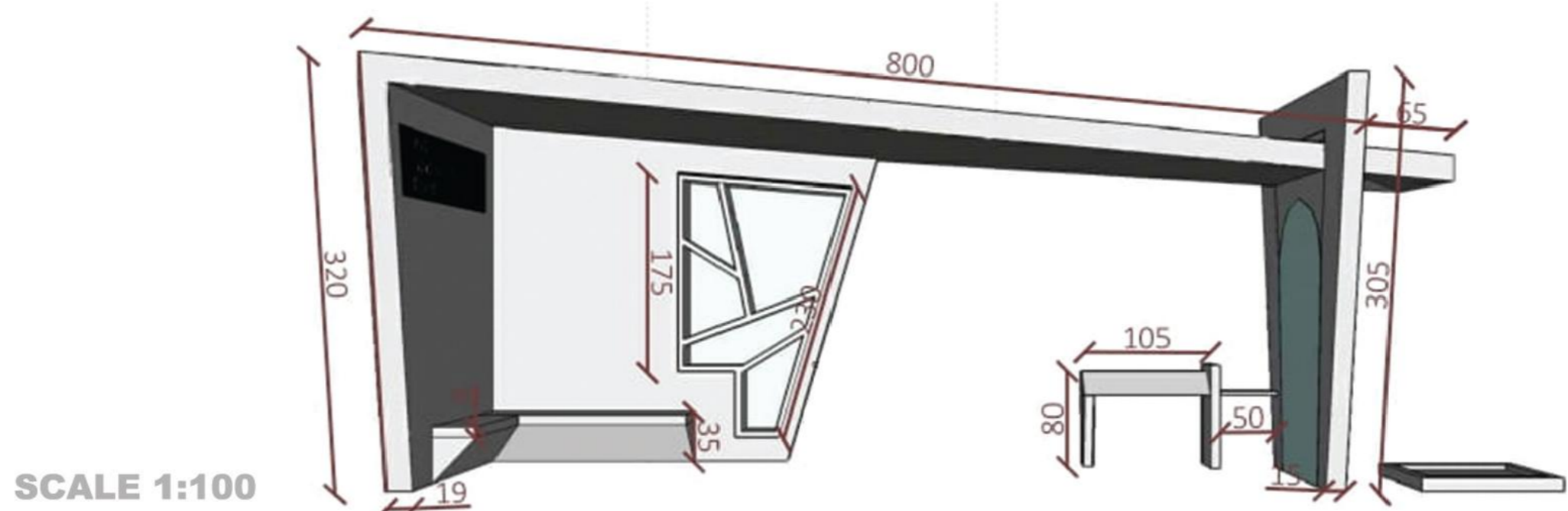
SIDE VIEWS



## CONCEPT ARTS



## TECHNICAL DRAWING



SCALE 1:100

## VISUALIZATIONS

